

**To determine if you need a replacement swivel rocker base kit, please follow the procedure outlined below.**

1. Carefully turn your chair on it's side, as shown to the right, to inspect welds on the swivel rocker base. Using a flashlight, locate the point at which the chair legs meet the center cylinder of the chair base and compare to the photos below.



2. If the welds where each chair leg meets the center cylinder go all the way around each joint like PHOTO 1, you do not need a repair kit. If the welds where each chair leg meets the center cylinder do not go all the way around each joint like PHOTO 2, your chair is included in this recall.

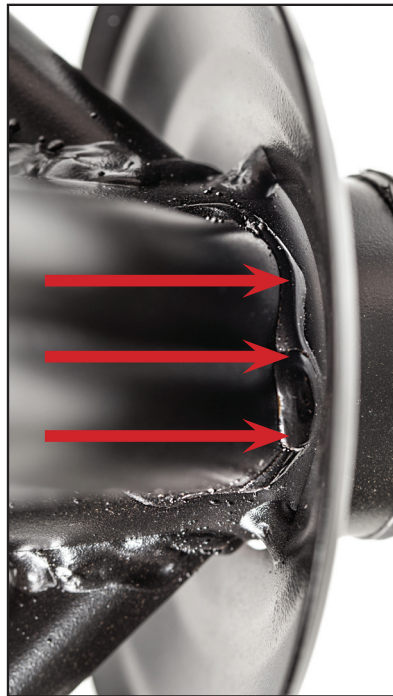


PHOTO 1 (CORRECT)

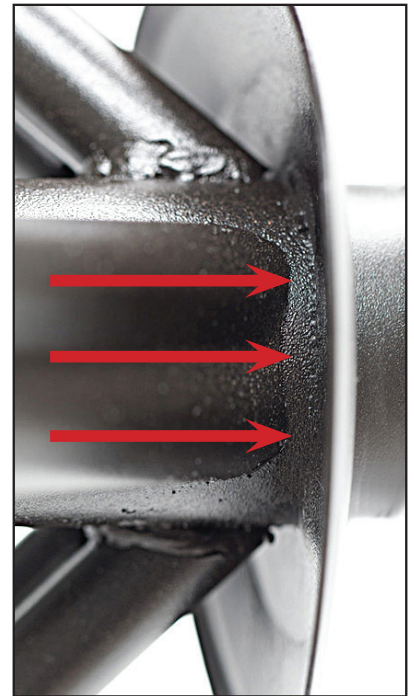


PHOTO 2 (INCORRECT)

3. Repeat this inspection for all chairs that have a swivel base.

*If you determine that your Fall River swivel rocker chairs are affected by this recall, or if you have any questions about the inspection, please discontinue using them immediately and contact us toll-free at (855) 899-2127, Monday through Friday between 8 a.m and 5 p.m. EDT, or visit our website at [www.bjsoutdoor.com](http://www.bjsoutdoor.com) and click on "Customer Care" and then "Recall Information" for more information. You can also email us at [customersupport@bjsoutdoor.com](mailto:customersupport@bjsoutdoor.com).*